



Plantwatch

Michael Schenkelberger - 06.12.2021



Architektur



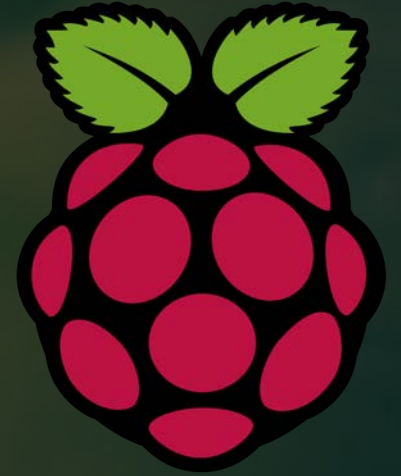
flowercare_
exporter



Prometheus



Grafana



Flowercare_exporter

- Temperatur
- Feuchtigkeit
- Helligkeit

zusätzlich

- Bodenleitfähigkeit

Systemd zum Autostart

Auszug:

Description=FlowerCareService

Wants=network.target

After=syslog.target network-online.target

[Service]

Type=simple

Environment="s01=-s Balkon_Klettererdbeeren=c4:7c:8d:62:82:bd"

...

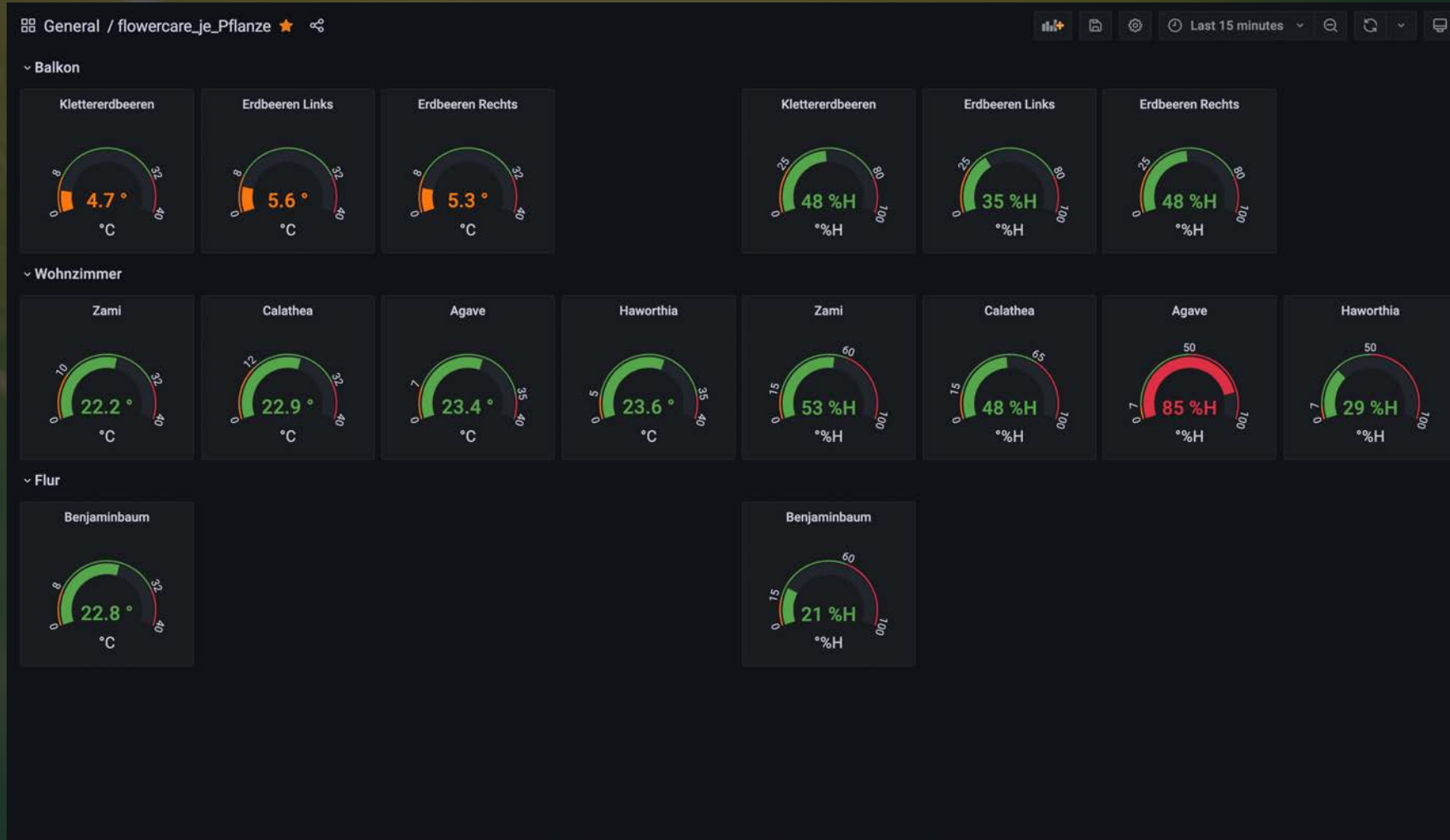
ExecStart=sudo home/pi/flowercare-exporter/./flowercare-exporter -r 150s \$s01
\$s02 \$s03 \$s04 \$s05

KillMode=process

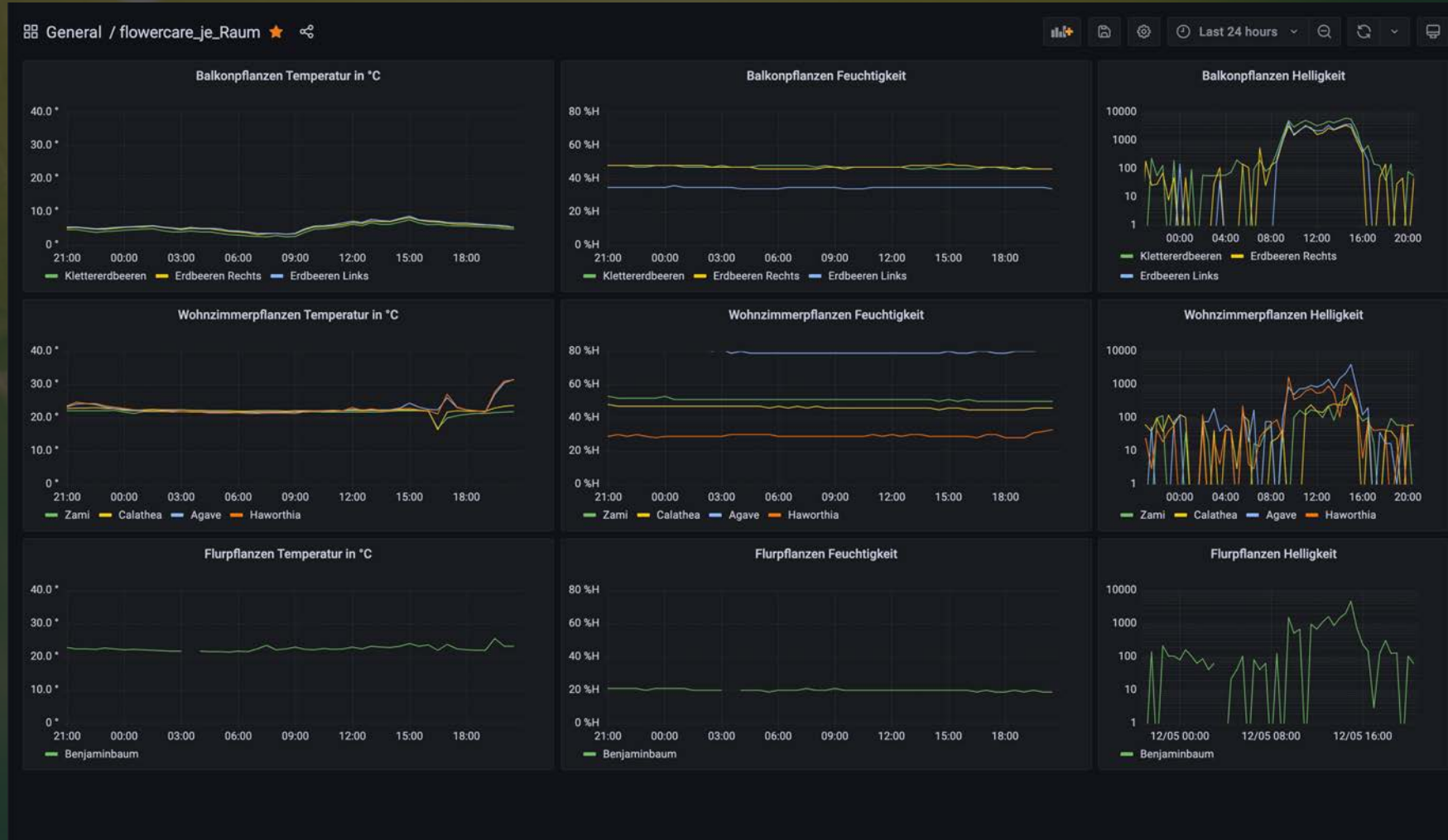
[Install]

WantedBy=multi-user.target

Darstellungs-Variante A



Darstellungs-Variante B



<https://4.bp.blogspot.com/-xKmmbWNALw8/XDpxl78MehI/AAAAAAAAAGzw/nOSecWam-kEZrT-h7TZyMizSnnCDVJCZwCK4BGAYYCw/s1600/Logo%2BBluetooth.png>

<https://cdn.worldvectorlogo.com/logos/grafana.svg>

https://upload.wikimedia.org/wikipedia/de/c/cb/Raspberry_Pi_Logo.svg

https://upload.wikimedia.org/wikipedia/commons/thumb/3/38/Prometheus_software_logo.svg/800px-Prometheus_software_logo.svg.png